

WORKshop

issue 05
www.choisgallery.com

*creative
commercial space
+ concept*

ENZO FERRARI MUSEUM

A DRAMATIC COMBINATION OF ARCHITECTURE, INTERIOR AND CAR DESIGNS.

HOTEL THE EXCHANGE

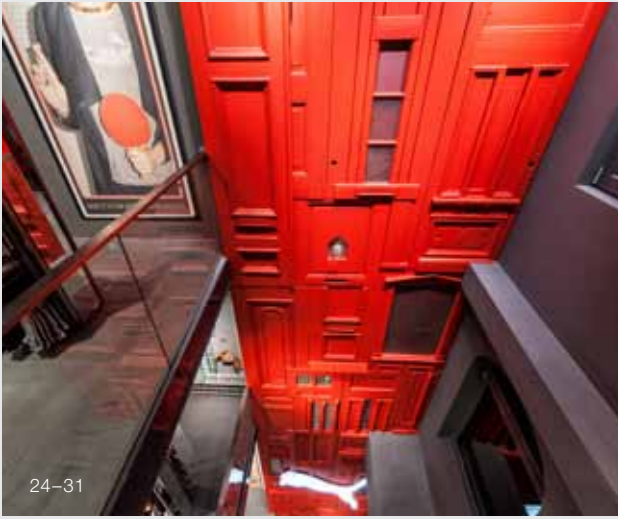
GO FABRIC CRAZY WITH INA MATT.

VIRGIN ATLANTIC NEW UPPER CLASS EXPERIENCE

SIP A COCKTAIL AT 30,000FT IN THE SKY.

ZUKUNFT 111

CHEZWEITZ & PARTNER CREATES AN AMAZING DARKENED ATMOSPHERE.



Retail

Stella Cadente	10
And A Yokohama	11
Le Ciel Bleu	12
Spread by Gum	14
Vertex	16
Hanging Forest	17
Camper Amsterdam	18
Acne Paris	20
Acne Copenhagen	21
Presents	22
Adashot by Eyecare	23
Puma Stores Amsterdam, London and Munich	24

Office

Youth Republic	70
Unilever Schaffhausen Hub	74
Pko Bank Polski Private Banking	80
Chelsea Workspace	86
KB1909 Headquarters	87
Logan	88
Toolbox Turin Office Lab	90
780 Tianshan Road	96
Tea House, J-Office	100

Restaurant / Bar

Tsunofuri	34
Ketel One Bar	38
Evolution Club	40
Los Soprano	42
Graffiti Café	46
Long March Canteen	48
Aura Light and Sound Suites	52
Innuendo	54
The Oriental Club – Settling Down	56
Très Honoré	62
Pats The Philly Way	66

Hotel

Burbury Hotel	104
Superbude	106
Cocoon Suites	112



172-175



190-207



230-235

Exhibition / Showroom

- 136 Green Waters
- 138 Contemporary Décor
- 140 Austrian Design – Raw and Delicate
- 144 Brunner Milan 2012
- 146 Zukunft 111
- 150 Frieze Art Fair NYC
- 152 MIDO Fair Stand 2012
- 154 Code_N at Cebit
- 156 Ichiro Tokyo 2012
- 157 Bloom Bloom Bloom
- 158 Prada 24-Hour Museum

Miscellaneous

- 164 Wuhan Pixel Box Cinema
- 170 Chongqing Mountain & City Sales Office
- 172 Virgin Atlantic Airways New Upper Class Experience

Features

- 178 Enzo Ferrari Museum
 - Dramatic combination of architecture, interior and car designs
- 190 Hotel The Exchange
 - Go fabric crazy with INA MATT
- 208 Emotional Aspects of Objects
 - By Maarten De Ceulaer
- 216 Narrative Design
 - By Pudelskern

Health / Beauty

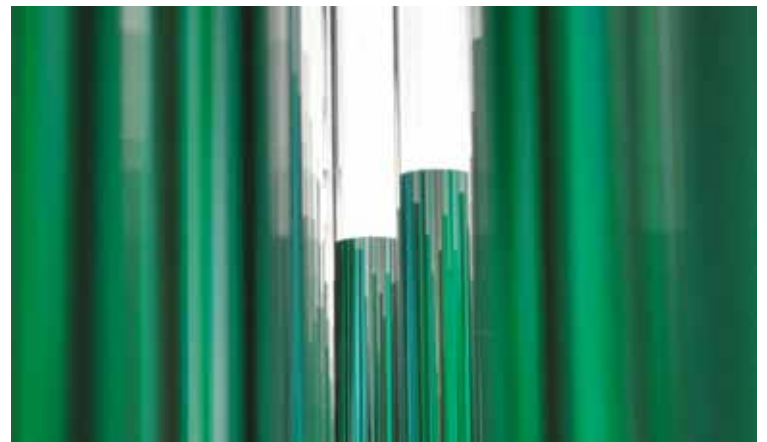
- 118 Dental Office in Spain
- 122 Le Cinq
- 126 Wax Revolution Polanco
- 132 Inch Hairstudio

Designer

226 Thirty-Year-Old Storyteller –

MET Studio

- 230 War Horse
- 236 Conflicts of Interest
- 240 The Manchester United Experience
- 243 Museo Sobre Las Adiciones
- 244 The BugWorld Experience
- 248 Hong Kong Wetland Park



HANGING FOREST

_Gilbert Moity

Hanging Forest is a static light sculpture that measure 7.3m long, 1m wide and weighs 470kg. Most of the buildings located in the Brussels Place du Grand Sablon are under the protection of the Cultural Heritage Authorities. Among these buildings is a new shop of the chocolate artisan Patrick Roger, in which it was compulsory to keep both the façade and the interiors unchanged. This shop is not only a delight for lovers of good chocolates. The boutique has a special lighting installation that appears to float in space. The shop is narrow and 10m long, with a 7m-high

ceiling. The layout was then conceived in a way to have visitors moving around the central area, occupied by a massive bronze sculpture, equally developed lengthwise, which appears as a sort of supine menhir. The request was for a lighting design suitable for this central sculpture which should also integrate with the shop general lighting. Referring to the work of the chocolate artisan, who draws much inspiration from nature, French lighting designer Gilbert Moity had the idea of creating a kind of 'hanging forest' floating over the sculpture. Given the long and narrow shape of the

space and considerable height, the lighting designer decided to create a suspended creation comprising 90 tubes of different lengths arranged rather untidily, but to be perceived like a unique amazing two-colour object which dominates the space by following its lines. This light radiates to the centre of the store and three other LEDs are installed at the lower end of each tube, directing light onto the surface of the bronze sculpture.